



# Public spaces occupancy management\*

Social distancing is one of the keys to a successful end of lockdown.

Citelum is committed to cities in order to measure this indicator in real-time through a smart and connected camera system.

## A complete solution:

- Ensuring the study (identifying the number of points), the installation, operation and the maintenance of the device
- Real-time tracking of indicators for the city's services through a dashboard for an optimal daily management and behavioral analysis
- Providing information on citizen apps to guide pedestrians towards the right green spaces
- Making the information directly available to the nearest residents thanks to variable message signs to indicate the disponibility of the premises

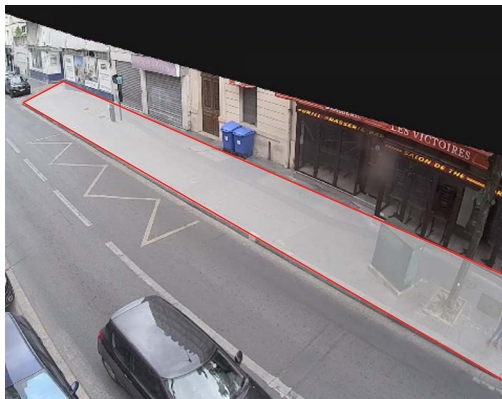
## 4 typical situations to support you:



- **Green spaces occupancy rate:** counting entrances/exits at access gates



- **High-traffic areas occupancy rate:** measuring surface density, ideal for seats near train stations



- **Sidewalk occupancy rate:** measuring surface density, ideal for shopping streets



- **Covered market occupancy rate:** counting entrances/exits at access gates



\*The device introduced on this document does'nt involve the collect or treatment of personal data